



# Aim of this presentation:

To share MAPA's experience on:

- Why CBD Approach?
- Pros and Cons of CBD approach
- Measures

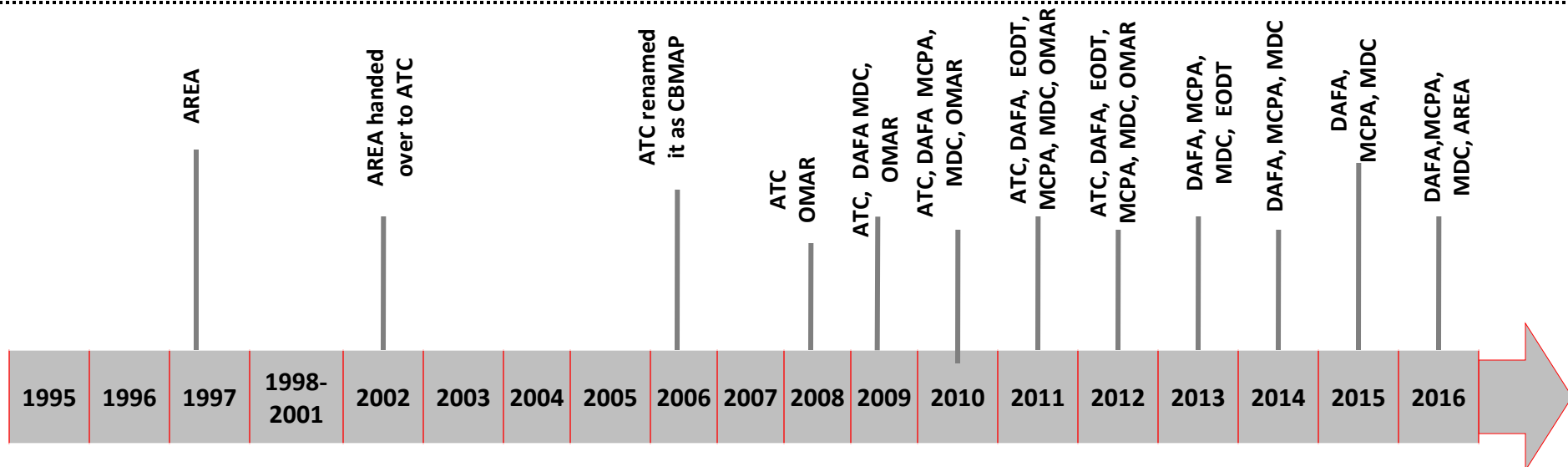
# Why CBD approach?

- Limited access of Traditional Demining Teams to Insecure Areas
- Increased Civilian Casualties in Remote Areas
- Frequent Local Requests for Mine Action Support





# Timeline of Community Based Demining in Afghanistan



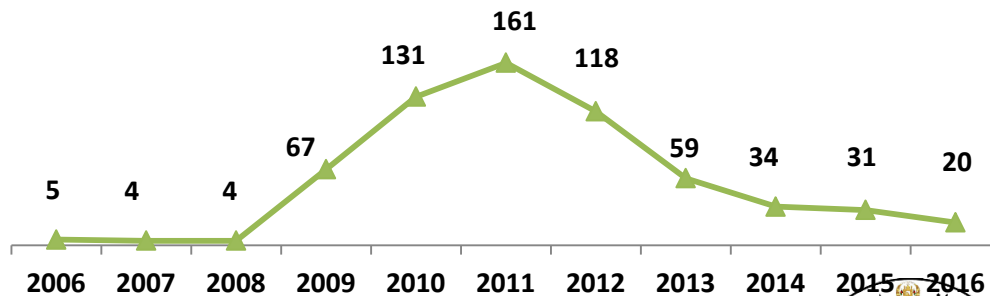
## CBDT Achievements

93 sq km area cleared

Devices Destroyed

- 14,138 AP mines
- 1,209 AT mines
- 511 AIED
- 40,170 ERWs

## Number of CDBT Per Years



**UNMAS**



# Structure of CBDT

• 1 x Team leader

shall be from core capacity of the organization but sometimes can be available among community members



• 2 x Section Leaders

shall be from core capacity of the organization but sometimes can be available among community members



• 10 x Deminers

Hired and trained from relevant communities



• Team Drivers and Guards

Hired from relevant communities



**UNMAS**



# Perceptions about CBD model

## Negative

- Increased Expectation
- Likely Reporting fake HA
- Less Control of Ex. QM
- Low quality service
- Time Consuming Process
- Go Slow Attitude  
(overstating the area size)

Cons

Pros

## Positive

- Increased Access
- Creating Job
- Income for communities
- Sustainability
- Building Trust
- Reducing Security Risks
- Capacity Building
- Ownership
- Donors interest



UNMAS



# Some main challenges:

**Below are the main challenges of CBD approach which should be carefully looked and mitigating measures needs to be implemented during the planning stage of the CBD project:**

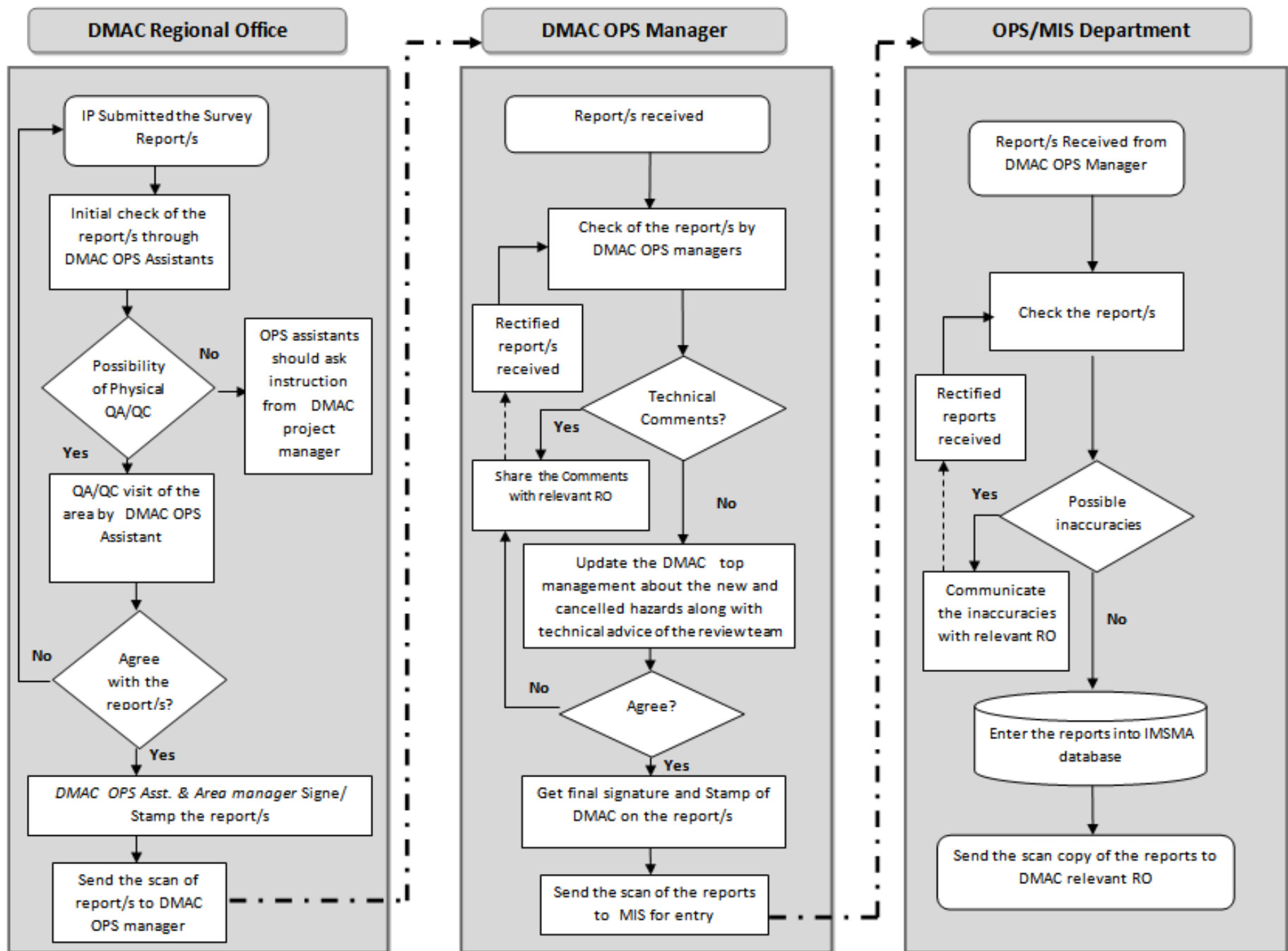
- Exaggerating the scale of contamination
- Reporting new hazardous areas
- Operations may not go as fast as expect – prolongation of employment
- Competition between the impacted communities

# Solutions:

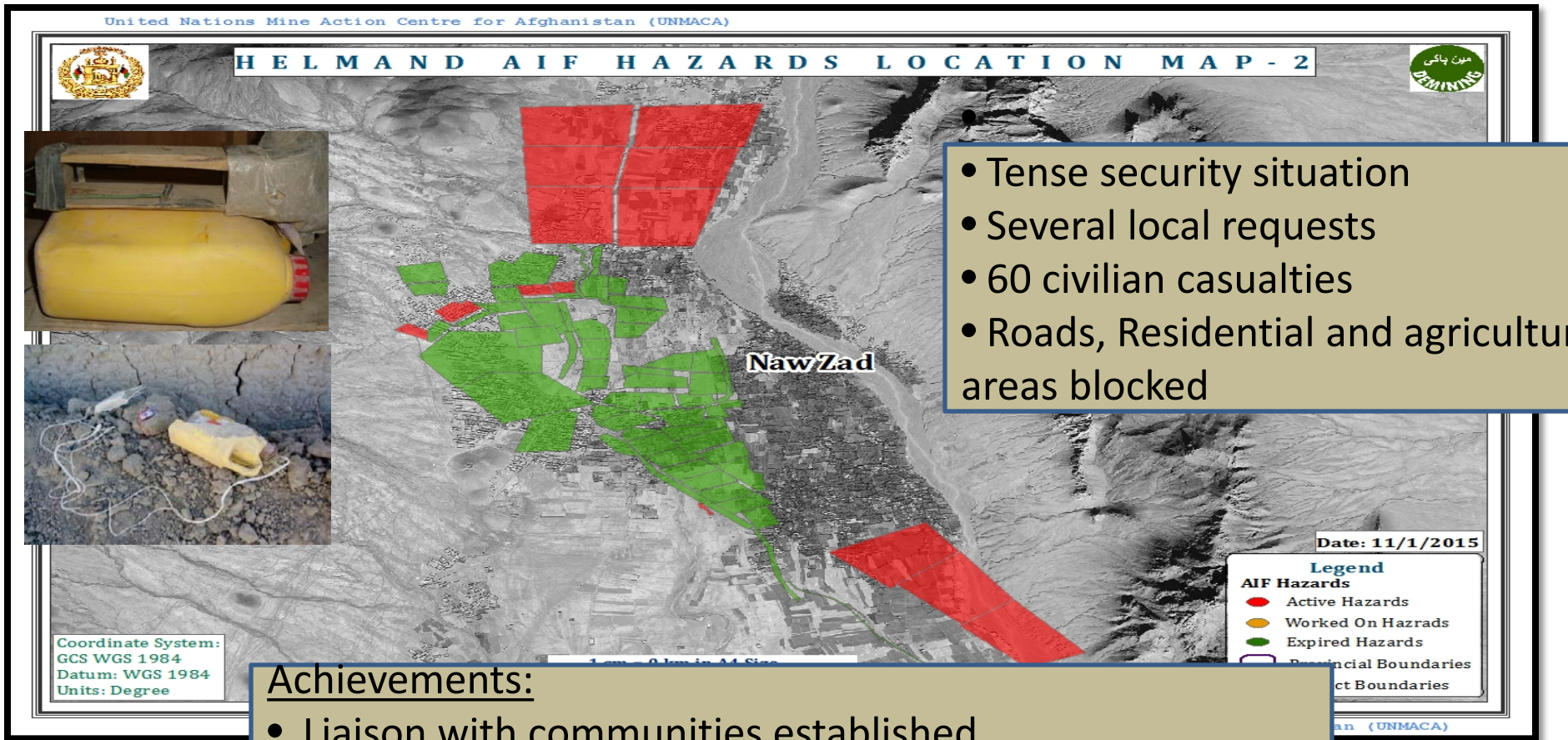
- Survey by core and independent capacity
- Comprehensive NTS and TS
- Confirmation assessment of reported hazards by representatives of NMAA
- Clear and effective survey procedures
- Community liaison – involving local elders and local authorities
- Manage people's expectations
- Discourage fake reported minefields



# Survey and Clearance Completion Reports Process Map



# Nawzad CBD Project in Helmand Province



- Tense security situation
- Several local requests
- 60 civilian casualties
- Roads, Residential and agricultural areas blocked

## Achievements:

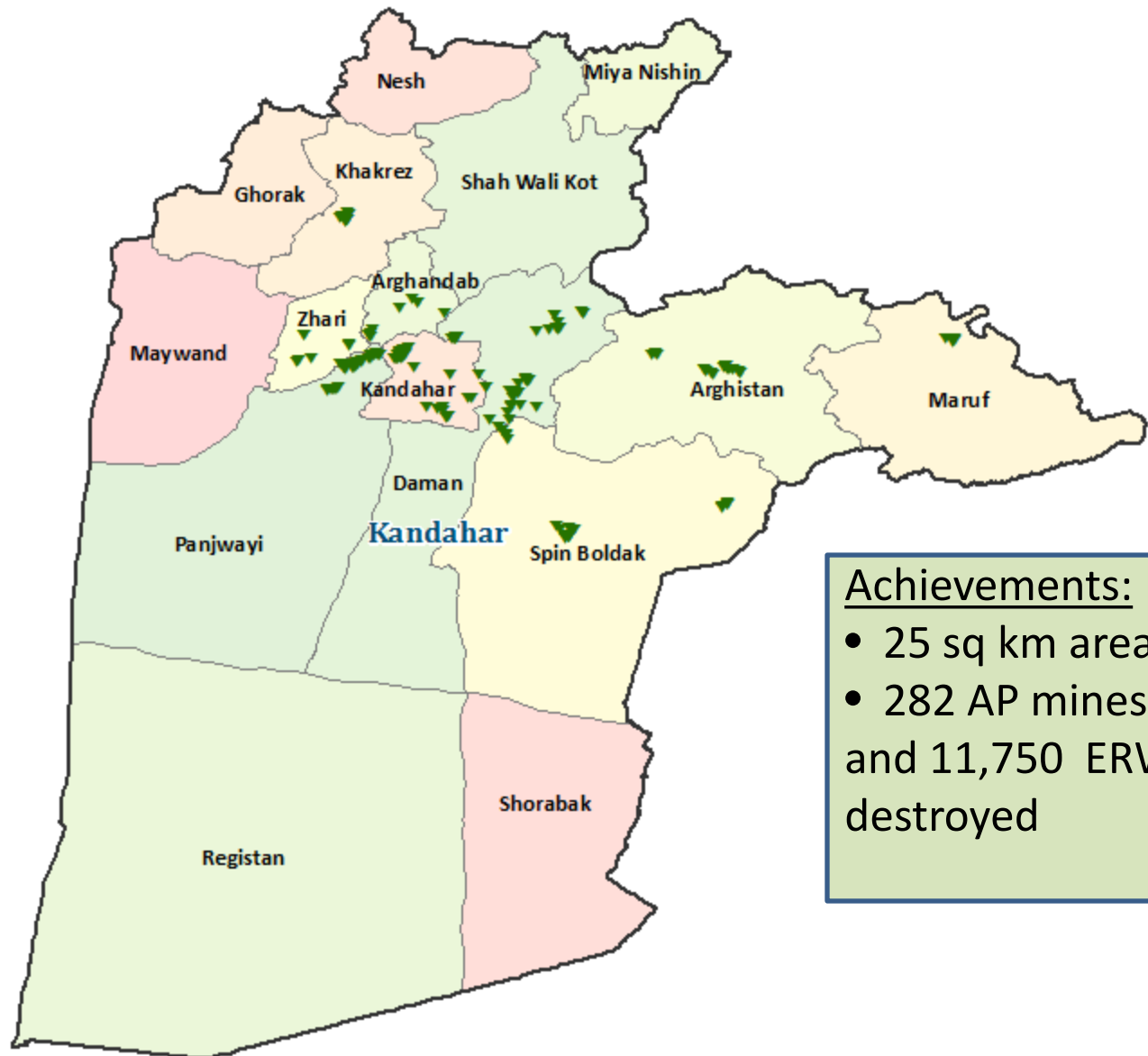
- Liaison with communities established
- CBD teams hired and trained
- 12 sq km AIED hazardous area surveyed by NTS teams
- 3 sq km Area cleared
- 511 IEDs and 2,300 ERW found and destroyed



**UNMAS**



# EMCPA Community Based Project in Kandahar Province



## Achievements:

- 25 sq km area cleared
- 282 AP mines , 273 AT and 11,750 ERW found destroyed

# CBD or traditional demining?



It is purely a management decision to make a choice between the two (i.e. CBD approach or traditional demining approach)!



It is all about the situation and how it is to be managed collectively, and little about individual's expectations.

-

At the end of the day  
it is the driver who drive to the success or failure not  
the vehicle itself.



**UNMAS**



# Thanks for the attention

## Questions

